

# ***POWER STEERING***

## **Hose**

High-pressure Hose	124
Low-pressure Hose	124

## **Accessories**

Restrictor Tube	125
Bump Tube Adapters	125
Braze-on Fittings	125

## **Fittings**

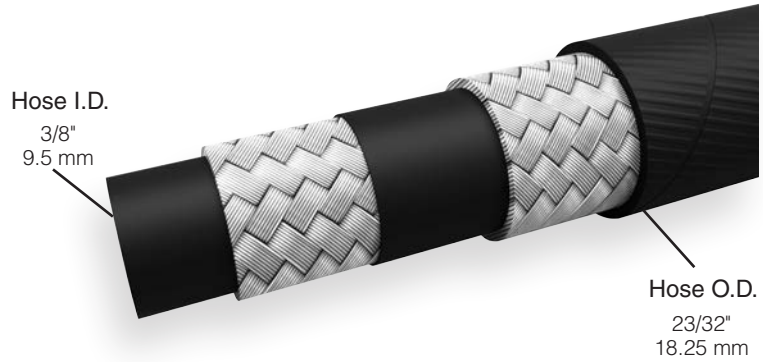
Banjo	126
Female Swivel	126
Male Swivel	127
Metric Female	128
Metric Male	128
Center Support	129
Universal	129
Braze-on Lifesaver	129
Compression	129

# HOSE

## HIGH PRESSURE

High Pressure Power Steering Hose, Rubber  
PS330

Carriers	24
Wires per Carrier	4
Hose Wall	0.067" / 1.7mm
Operating Pressure	1,650 psi
Burst Pressure	7,800 psi
Bend Radius	3.2" / 81.3mm
Temperature Range	-40°F to 300°F / -40°C to 149°C

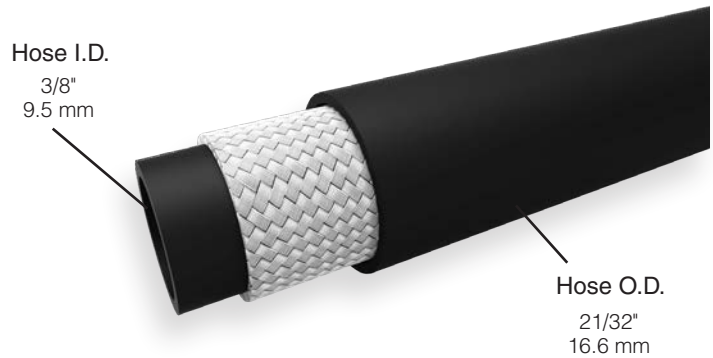


*Compatible with petroleum based power steering and transmission oils.*

## LOW PRESSURE

Low Pressure Power Steering Hose, Rubber  
PS331

Carriers	24
Wires per Carrier	2
Hose Wall	0.06" / 1.5mm
Operating Pressure	300psi
Burst Pressure	1,200 psi
Bend Radius	3.0" / 76.2mm
Temperature Range	-40°F to 300°F / -40°C to 149°C



*Compatible with petroleum based oils.*

# ACCESSORIES

## RESTRICTOR TUBE

### BQ801

The restrictor tube will reduce noise by floating in the hose and restricting flow. If using, install before crimping the end fitting.



## ADAPTERS BUMP TUBE

These adapters are for power steering and fuel systems.

### Male to O-ring Pilot

O-ring pilot includes a high-temperature Viton O-ring.

Stud Thread	O-ring Pilot Thread	Hex	Overall Length	Part Number
1/2-20 UNF (-05 JIC)	1/2-20 UNF	9/16"	37.4mm	5MBT-5MJ
9/16-18 UNF (-06 JIC)	11/16-18 UNS	3/4"	41.9mm	7MBT-6MJ
9/16-18 UNF (-06 JIC)	M14×1.5	5/8"	38.8mm	14MMBT-6MJ
9/16-18 UNF (-06 JIC)	M16×1.5	17mm	38.9mm	16MMBT-6MJ
9/16-18 UNF (-06 JIC)	M18×1.5	3/4"	39.4mm	18MMBT-6MJ



### Male to O-ring Boss

O-ring boss includes a PTFE crush ring.

Stud Thread	O-ring Boss Thread	Hex	Overall Length	Part Number
9/16-18 UNF (-06 JIC)	M16×1.5 (Ford type III)	18mm	32.1mm	16MMORB-6MJ



### Female to O-ring Pilot

O-ring pilot includes a high-temperature Viton O-ring.

Port Thread	O-ring Pilot Thread	Hex	Overall Length	Part Number
5/8-18 UNF	M16×1.5	3/4"	30.8mm	16MMBT-6FI

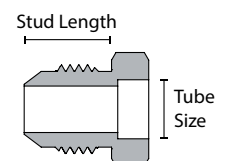


/// Bump Tube Adapter Assortment Kit, BQ7003, is on page 157.

## ADAPTERS BRAZE-ON FITTINGS

### -06 JIC

Thread	Type	Tube Size	Stud Length	Hex	Material	Part Number
9/16-18 UNF	-06 JIC	3/8"	14.1mm	5/8"	Aluminum	BQ170
9/16-18 UNF	-06 JIC	3/8"	14.1mm	5/8"	Steel	BQ226
9/16-18 UNF	-06 JIC	1/2"	14.1mm	11/16"	Steel	BQ228
9/16-18 UNF	-06 JIC	10mm	14.1mm	5/8"	Steel	BQ227



/// For a full list of BrakeQuip's Braze-On Fittings, see page 146.

# FITTINGS

## BANJO

### PSHFB130

Hole size 14 mm  
 Thickness 17.3 mm  
 Width 30 mm  
 Overall length 56.3 mm



### PSHFB132

Hole size 14 mm  
 Thickness 17.3 mm  
 Width 30 mm  
 Bend 45°  
 Tube size 12 mm  
 Overall length 92.9 mm



### PSHFB133

Hole size 14 mm  
 Thickness 14 mm  
 Width 24 mm  
 Tube size 10 mm  
 Overall length 86.8 mm



### PSHFB134

Hole size 14 mm  
 Thickness 14 mm  
 Width 24 mm  
 Bend 20°  
 Tube size 10 mm  
 Overall length 106 mm



### PSHFB135

Hole size 14 mm  
 Thickness 14 mm  
 Width 24 mm  
 Tube size 10 mm  
 Overall length 104 mm



## FEMALE SWIVEL 5/8-18 UNF

### PSHF116

Thread 5/8-18 UNF  
 Flare 45° double  
 Angle straight  
 Hex 7/8"  
 Overall length 57 mm



### PSHF117

Thread 5/8-18 UNF  
 Flare 45° double  
 Bend 45°  
 Hex 13/16"  
 Tube size 3/8"  
 Overall length 95 mm



### PSHF115

Thread 5/8-18 UNF  
 Flare 45° double  
 Bend 90°  
 Hex 13/16"  
 Tube size 3/8"  
 Overall length 80 mm



# FITTINGS CONTINUED

## FEMALE SWIVEL 9/16-18 UNF

### PSHF106

Thread	9/16-18 UNF
Seat type	37° drill-point
Angle	straight
Overall length	57 mm



Use with BQ226 or BQ227 braze-on fittings or with bump tube adapters.

### PSHF142

Thread	9/16-18 UNF
Flare	37° single
Bend	45°
Hex	11/16"
Tube size	3/8"
Overall length	94 mm



### PSHF114

Thread	9/16-18 UNF
Flare	37° double
Bend	90°
Hex	11/16"
Tube size	3/8"
Overall length	80 mm



## MALE SWIVEL 7/16-24 UNS

### PSHF118

Thread	7/16-24 UNS
Flare	45° double
Bend	straight
Tube size	1/4"
Overall length	70 mm



### PSHF121

Thread	7/16-24 UNS
Flare	45° double
Bend	45°
Tube size	3/8"
Overall length	77 mm



### PSHF124

Thread	7/16-24 UNS
Flare	45° double
Bend	90°
Tube size	3/8"
Overall length	66 mm



## MALE SWIVEL 1/2-20 UNF

### PSHF119

Thread	1/2-20 UNF
Flare	45° double
Bend	straight
Tube size	5/16"
Overall length	70 mm



### PSHF122

Thread	1/2-20 UNF
Flare	45° double
Bend	45°
Tube size	1/4"
Overall length	81 mm



# FITTINGS CONTINUED

---

## PSHF125

Thread 1/2-20 UNF  
 Flare 45° double  
 Bend 90°  
 Tube size 3/8"  
 Overall length 75 mm



## MALE SWIVEL 5/8-18 UNF

### PSHF120

Thread 5/8-18 UNF  
 Flare 45° double  
 Bend straight  
 Tube size 3/8"  
 Overall length 73 mm



### PSHF123

Thread 5/8-18 UNF  
 Flare 45° double  
 Bend 45°  
 Tube size 3/8"  
 Overall length 86 mm



### PSHF126

Thread 5/8-18 UNF  
 Flare 45° double  
 Bend 90°  
 Tube size 1/4"  
 Overall length 80 mm



## MALE SWIVEL M16×1.5

### PSHF146

Thread M16×1.5  
 Flare 45° double  
 Bend 90°  
 Tube size 3/8"  
 Overall length 68.6 mm



## METRIC FEMALE

### PSHF108

Thread M14×1.5  
 Seat type inverted  
 Angle straight  
 Hex 19 mm  
 Overall length 47 mm



## METRIC MALE

### PSHFMM131

Thread M16×1.5  
 Stud length 31.5 mm  
 Hex 19 mm  
 Overall length 70 mm



# FITTINGS *CONTINUED*

## CENTER SUPPORT

### PSHF100

Overall length 27 mm



## UNIVERSAL

### PSHF133

Tube size 3/8"  
Overall length 500 mm



## BRAZE-ON LIFESAVER

### PSHF101

Tube size 3/8"  
Hex 5/8"  
Overall length 44 mm



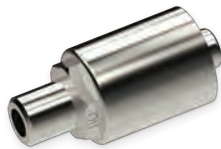
### PSHF102

Tube size 10 mm  
Hex 5/8"  
Overall length 44 mm



### PSHF105

Tube size 1/4"  
Hex 5/8"  
Overall length 47 mm



### PSHF107

Tube size 5/16"  
Hex 5/8"  
Overall length 44 mm



### PSHF109

Tube size 1/4"  
Hex 5/8"  
Overall length 35 mm



### PSHF111

Tube size 12 mm  
Hex 16 mm  
Overall length 44 mm



## COMPRESSION

### PSHF103

Tube size 3/8"  
Hex 5/8"  
Overall length 65 mm



### PSHF104

Tube size 10 mm  
Hex 16 mm  
Overall length 65 mm



### PSHF112

Tube size 5/16"  
Hex 5/8"  
Overall length 50 mm

