

LOW PROFILE

Hose		Imperial Female	
Braided Brake Hose	106	Standard Mount	117
Tools		Clip Mount	117
Braided Hose Shears	106	Bulkhead Mount	117
Skiving Tool	106	Metric Female	
General Fittings		Standard Mount	118
Crimp Shell	107	Bolt Mount	118
Female Swivel	107	Clip Mount	118
Male Swivel	108	Imperial Male	
Crimp Tee	110	JIC Male	120
Lifesaver	111	Bulkhead Mount	120
Universal	111	Standard Mount	120
Clutch	111	Metric Male	
Stems	112	Bulkhead Mount	121
Block Banjo		Standard Mount	121
8mm hole	113	Center Support	
10mm hole	113	Bracket Mount	122
Round Banjo		Clip Mount	122
10mm hole	114		
11mm hole	116		
7/16" hole	116		

HOSE

BRAIDED BRAKE HOSE

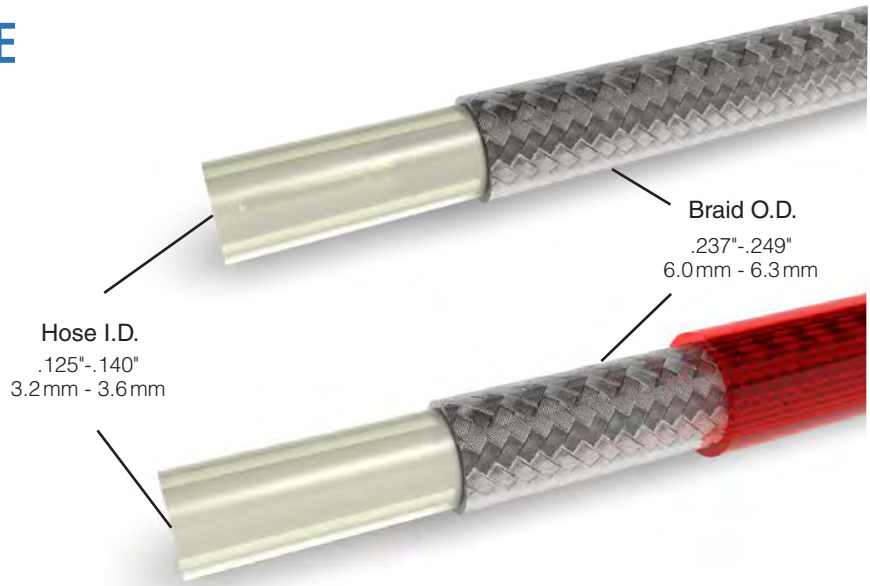
Unjacketed Braided Hose

BQ301 For off-road use only.

Jacketed Braided Hose

BQ302BK Solid black jacket
BQ303 Clear jacket
BQ303RD Red jacket
BQ303BL Blue jacket
BQ303BK Smoke jacket

Carriers	23
Wires per Carrier	4
Hose Wall	0.40" / 10mm
Operating Pressure	3,000 psi
Burst Pressure	12,000 psi
Bend Radius	2.0" / 50.8mm
Temperature Range	-65°F to 450°F / -54°C to 232°C



*Compatible with DOT 3, 4, 5 (silicone-based), and 5.1 brake fluids, plus oil and most fluids.
 Warning: No gases or acids should be used.*

/// Braided grommets are listed within grommets on page 18.

TOOLS

BRAIDED HOSE SHEARS

BQ2104



SKIVING TOOL

BQ436



*Skives lengths for Standard and Low Profile crimps.
 Uses a common No. 9 single-edge razor blade.*

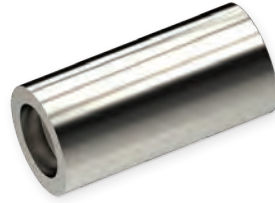
/// Skiving instructions are in the [hose assembly manual](#).

GENERAL FITTINGS

CRIMP SHELL

LP121

LP stainless	LP121SS
LP zinc-nickel	LP121Z



/// Instructions for assembling low profile fittings can be found in the [hose assembly manual](#).

FEMALE SWIVEL 3/8-24 UNF

LP09W-6

Thread	3/8-24 UNF
Seat type	37° drill-point
Bend	straight
Overall length	42 mm

Standard	HF09W
LP chrome	LP09W-6C



wire-lock

LP10W-6

Thread	3/8-24 UNF
Seat type	37° drill-point
Bend	45°
Tube size	1/4"
Overall length	57 mm

Standard	HF10
In chrome	LP10W-6C



wire-lock

LP11-6

Thread	3/8-24 UNF
Flare	37° double
Bend	90°
Tube size	3/16"
Overall length	44 mm

Standard	HF11
Stainless	HF11SS
Alternative	LP11W-6



LP11W-6

Thread	3/8-24 UNF
Seat type	37° drill-point
Bend	90°
Tube size	1/4"
Overall length	56 mm

Alternative	LP11-6
-------------	--------



wire-lock

FEMALE SWIVEL 7/16-20 UNF

LP12W-7

Thread	7/16-20 UNF
Seat type	37° drill-point
Bend	straight
Overall length	42 mm

Standard	HF12
Stainless	HF12SS
LP chrome	LP12W-7C



wire-lock

LP13W-7

Thread	7/16-20 UNF
Seat type	37° drill-point
Bend	45°
Tube size	1/4"
Overall length	60 mm

Standard	HF13
Stainless	HF13SS
LP chrome	LP13W-7C



wire-lock

GENERAL FITTINGS CONTINUED

LP14W-7

Thread 7/16-20 UNF
 Seat type 37° drill-point
 Bend 90°
 Tube size 1/4"
 Overall length 56 mm



wire-lock

Standard	HF14
LP chrome	LP14W-7C

FEMALE SWIVEL M10×1

LP128W

Thread M10×1
 Seat type 37° inverted
 Bend straight
 Overall length 38 mm



wire-lock

MALE SWIVEL 3/8-24 UNF

LP16-6

Thread 3/8-24 UNF
 Flare 45° double
 Bend straight
 Tube size 3/16"
 Overall length 55 mm



Standard	HF16
Brass	HF157BT
Stainless	HF16SS
LP chrome	LP16-6C
LP stainless	LP16-6SS

LP17-6

Thread 3/8-24 UNF
 Flare 45° double
 Bend 90°
 Tube size 3/16"
 Overall length 49 mm



Standard	HF17
Stainless	HF17SS
LP chrome	LP17-6C
LP stainless	LP17-6SS

LP33-6

Thread 3/8-24 UNF
 Flare 45° double
 Bend 45°
 Tube size 3/16"
 Overall length 70 mm



Standard	HF33
Stainless	HF33SS
LP chrome	LP33-6C
LP stainless	LP33-6SS

LP45-6

Thread 3/8-24 UNF
 Flare 45° double
 Bend 35°
 Tube size 3/16"
 Overall length 91 mm



Stainless	HF45SS
LP chrome	LP45-6C

GENERAL FITTINGS *CONTINUED*

LP46-6

Thread 3/8-24 UNF
 Flare 45° double
 Bend 90°
 Tube size 3/16"
 Overall length 60 mm



LP chrome LP46-6C

MALE SWIVEL 7/16-24 UNS

LP06-7

Thread 7/16-24 UNS
 Flare 45° double
 Bend 90°
 Tube size 1/4"
 Overall length 64 mm



Standard HF06

LP07-7

Thread 7/16-24 UNS
 Flare 45° double
 Bend 45°
 Tube size 1/4"
 Overall length 80 mm



LP15-7

Thread 7/16-24 UNS
 Flare 45° double
 Bend straight
 Tube size 1/4"
 Overall length 58 mm



MALE SWIVEL M10×1

LP08Z

Thread M10×1
 Flare DIN
 Bend straight
 Tube size 3/16"
 Overall length 74 mm



LP34-M10X1

Thread M10×1
 Flare 45° double
 Bend straight
 Tube size 3/16"
 Overall length 77 mm



Standard HF34
 LP stainless LP34-M10X1SS

GENERAL FITTINGS CONTINUED

LP82-M10X1

Thread M10×1
 Flare DIN
 Bend straight
 Tube size 3/16"
 Overall length 69.5mm



Standard HF82
 LP zinc-nickel LP82-M10X1Z

LP125

Thread M10×1
 Flare DIN
 Bend 90°
 Tube size 3/16"
 Overall length 48.2mm



Standard HF158

LP126

Thread M10×1
 Flare DIN
 Bend 45°
 Tube size 3/16"
 Overall length 66.3mm



LP127

Thread M10×1
 Flare DIN
 Bend straight
 Tube size 3/16"
 Overall length 58.2mm



MALE SWIVEL M10×1.25

LP145-M10X125

Thread M10×1.25
 Flare 45° double
 Bend straight
 Tube size 3/16"
 Overall length 71.2mm



CRIMP TEE

LP124

Mount hole 8mm

LP stainless LP124SS



GENERAL FITTINGS CONTINUED

LIFESAVER

LP01-3

Tube size 3/16"

Standard	HF01
Stainless	HF01SS



LP01-4

Tube size 1/4"

Standard	HF26
----------	------



LP01-5

Tube size 5/16"

Standard	HF27
----------	------



/// Instructions for using lifesavers can be found in the [hose assembly manual](#).

UNIVERSAL

LP02

Tube size 3/16"
Overall length 105mm

Standard	HF02
----------	------



LP03

Tube size 1/4"
Overall length 105mm

Standard	HF03
----------	------



/// Instructions for using universal fittings can be found in the [hose assembly manual](#).

CLUTCH

LP156







Standard	HF114
----------	-------

O-Ring included.



GENERAL FITTINGS CONTINUED

STEMS FEMALE SEAT

Part Number	Image	Seat type	Spec	Length	Common Fitments
LPS-SI-SAE		Inverted	SAE	Short	LPIF01, LPIF02, LPMF01, LPMF09
LPS-LI-SAE		Inverted	SAE	Long	LPMF02
LPS-SD-DIN		Drill-point	DIN	Short	LPMF08
LPS-SI-JIC		Inverted	JIC	Short	
LPS-SD-SAE		Drill-point	SAE	Short	
LPS-SD-JIC		Drill-point	JIC	Short	

STEMS TUBE STYLE

Part Number	Image	Spec	Length	Tube Nuts
LPS-T-DIN		DIN	Tube	Use with BQ9150 or BQ9151
LPS-T-JIC		JIC	Tube	Use with BQ9150 or BQ9151
LPS-T-SAE		SAE	Tube	Use with BQ9150 or BQ9151

TUBE NUTS FOR LOW PROFILE STEMS

Part Number	Image	Thread	Thread Depth	Hex
BQ9150		7/16-20 UNF	12.25 mm	9/16"
BQ9151		3/8-24 UNF	10.25 mm	7/16"

/// Learn how to assemble low profile fittings in the [hose assembly manual](#).

BLOCK BANJO

10 MM HOLE

LPB12-10M

Hole	10mm
Thickness	11.5mm
Width	20mm
Bend	10°
Overall length	52mm



Standard HFB12

LPB14

Hole	10mm
Thickness	13mm
Width	20mm
Bend	20°
Overall length	50.5mm



Standard HFB14

LPB493-10M

Hole	10mm
Thickness	1/2"
Width	18mm
Bend	90°
Overall length	72mm



left

Standard HFB493
Right pair LPB494-10M

LPB494-10M

Hole	10mm
Thickness	1/2"
Width	18mm
Bend	90°
Overall length	72mm



right

Standard HFB494
Left pair LPB493-10M

ROUND BANJO

8 MM HOLE

LPB27-8M

Hole	8mm
Thickness	6.5mm
Width	14mm
Bend	straight
Overall length	49mm



bendable to 45°

Standard HFB27

ROUND BANJO *CONTINUED*

10 MM HOLE 17 MM WIDTH

LPB01-10M

Hole	10 mm
Thickness	8 mm
Width	17 mm
Bend	straight
Overall length	48.1 mm



bendable to 45°

Standard	HFB01
LP chrome	LPB01-10MC
LP stainless	LPB01-10MSS
Anodized aluminum	
Black	LPB01-10MABK
Blue	LPB01-10MABL
Red	LPB01-10MARD



LPB01-20-10M

Hole	10 mm
Thickness	8 mm
Width	17 mm
Bend	20°
Overall length	48.7 mm



LPB01-45-10M

Hole	10 mm
Thickness	8 mm
Width	17 mm
Bend	45°
Overall length	48.7 mm



Anodized aluminum	
Black	LPB01-45-10MABK
Blue	LPB01-45-10MABL
Red	LPB01-45-10MARD



LPB01-75-10M

Hole	10 mm
Thickness	8 mm
Width	17 mm
Bend	75°
Overall length	30.7 mm



LPB01-90-10M

Hole	10 mm
Thickness	8 mm
Width	17 mm
Bend	90°
Overall length	22.1 mm



Standard	HFB32
Anodized aluminum	
Black	LPB01-90-10MABK
Blue	LPB01-90-10MABL
Red	LPB01-90-10MARD



LPB455-10M

Hole	10 mm
Thickness	8 mm
Width	17 mm
Bend	straight
Overall length	75.4 mm



Standard	HFB194
----------	--------

ROUND BANJO *CONTINUED*

LPB653

Hole 10 mm
 Thickness 8 mm
 Width 17 mm
 Bend 20°
 Overall length 46.5 mm



side bend

LPB654

Hole 10 mm
 Thickness 8 mm
 Width 17 mm
 Bend 45°
 Overall length 39.4 mm



side bend

LPB655

Hole 10 mm
 Thickness 8 mm
 Width 17 mm
 Bend 90°
 Overall length 22.1 mm



side bend

10 MM HOLE 18 MM WIDTH

LPB09-10M

Hole 10 mm
 Thickness 10 mm
 Width 18 mm
 Bend straight
 Overall length 48.7 mm



bendable to 45°

- Standard HFB09
- Stainless HFB09SS
- LP chrome LPB09-10MC
- LP stainless LPB09-10MSS

LPB09-45-10M

Hole 10 mm
 Thickness 10 mm
 Width 18 mm
 Bend 45°
 Overall length 48.2 mm



LPB09-75-10M

Hole 10 mm
 Thickness 10 mm
 Width 18 mm
 Bend 75°
 Overall length 31.4 mm



LPB09-90-10M

Hole 10 mm
 Thickness 10 mm
 Width 18 mm
 Bend 90°
 Overall length 23 mm



LPB171-10M

Hole 10 mm
 Thickness 8 mm
 Width 18 mm
 Bend 40°
 Overall length 59.8 mm



- LP chrome LPB171-10MC

LPB656

Hole 10 mm
 Thickness 10 mm
 Width 18 mm
 Bend 20°
 Overall length 46.6 mm



side bend

ROUND BANJO *CONTINUED*

LPB657

Hole 10mm
 Thickness 10mm
 Width 18mm
 Bend 45°
 Overall length 39.4mm



LPB658

Hole 10mm
 Thickness 10mm
 Width 18mm
 Bend 90°
 Overall length 23mm



11 MM HOLE

LPB178-7

Hole 11mm
 Thickness 8.5mm
 Width 20mm
 Bend 40°
 Overall length 58.3mm



LP chrome LPB178-7C

12 MM HOLE

LPB47-12M

Hole 12mm
 Thickness 10mm
 Width 19mm
 Bend straight
 Overall length 50.2mm



Standard HFB47
 Stainless HFB47SS

7/16" HOLE

LPB448-7

Hole 7/16"
 Thickness 10mm
 Width 19mm
 Bend straight
 Overall length 48.7mm



Standard HFB448
 LP stainless LPB448-7SS

LPB448-45-7

Hole 7/16"
 Thickness 10mm
 Width 19mm
 Bend 45°
 Overall length 42mm



LPB448-90-7

Hole 7/16"
 Thickness 10mm
 Width 19mm
 Bend 90°
 Overall length 45.2mm



Standard HFB681

LPB652

Hole 7/16"
 Thickness 10mm
 Width 19mm
 Bend 35°
 Overall length 50.7mm



Standard HFB682

IMPERIAL FEMALE

STANDARD MOUNT

LPIF126-6

Thread 3/8-24 UNF port
 Seat type inverted
 Flats 8 mm
 Overall length 42.7 mm



LP chrome LPIF126-6C

BULKHEAD MOUNT

LPIFX01

Thread 7/16-24 UNS port
 Mount thread 5/8-18 UNF
 Overall length 49.2 mm



CLIP MOUNT

Not all clip-mount fittings come with an e-clip. The fitting will be pictured with a clip if the clip is included.

LPIF01

Thread 3/8-24 UNF port
 Seat type inverted
 Hex 17 mm
 Overall length 41.5 mm



Standard HFIF01
 Brass HFIF01B
 Stainless HFIF01SS
 Alternative LPIF01-6 *
 * LP stem LPS-SI-SAE

LPIF01-6

Thread 3/8-24 UNF port
 Hex 17 mm



LP chrome LPIF01-6C
 LP stainless LPIF01-6SS

LPIF05

Thread 3/8-24 UNF port
 Hex 19 mm



LPIF10

Thread 3/8-24 UNF port
 Flats 16 mm



LPIF02-7

Thread 7/16-24 UNS port
 Hex 17 mm



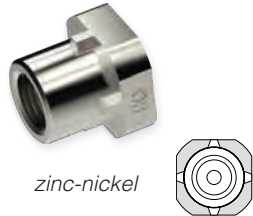
/// E-clips, BQ12, are on page 19.
 Retaining clips are on page 150.

METRIC FEMALE

STANDARD MOUNT M10×1

LPMF62Z

Thread M10×1 port
Flats 17mm



BOLT MOUNT M10×1

LPMF48

Thread M10×1 port
Seat type inverted
Mount hole 8.8mm
Overall length 57.2mm



LPMF322-M10X1

Thread M10×1 port
Seat type inverted
Mount hole M8×1.25
Overall length 46.2mm



| Standard HFMF48

Not all clip-mount fittings come with an e-clip. The fitting will be pictured with a clip if the clip is included.

CLIP MOUNT M10×1

LPMF01-M10X1

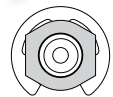
Thread M10×1 port
Hex 17mm



| LP stainless LPMF01-M10X1SS

LPMF02-M10X1

Thread M10×1 port
Flats 17mm



LPMF04

Thread M10×1 port
Flats 17mm



LPMF05-M10X1

Thread M10×1 port
Hex 14mm



| LP zinc-nickel LPMF05-M10X1Z

LPMF08-M10X1

Thread M10×1 port
Hex 17mm



LPMF11

Thread M10×1 port
Flats 19mm



METRIC FEMALE *CONTINUED*

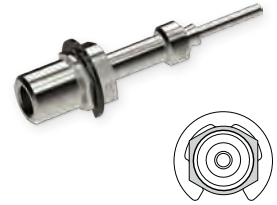
LPMF14

Thread M10×1 port
Flats 17 mm



LPMF15

Thread M10×1 port
Seat type inverted
Flats 17 mm
Overall length 77 mm



Standard HFMF393

LPMF16

Thread M10×1 port
Flats 19 mm



LPMF20

Thread M10×1 port
Flats 17 mm



LPMF24

Thread M10×1 port
Flats 19 mm



LPMF28

Thread M10×1 port
Flats 17 mm



CLIP MOUNT M10×1.25

LPMF09-M10X125

Thread M10×1.25 port
Hex 17 mm



CLIP MOUNT M12×1

LPMF10

Thread M12×1 port
Hex 19 mm



LPMF47Z

Thread M12×1 port
Seat type drill-point
Hex 5/8"
Overall length 52.1 mm



zinc-nickel

Standard HFMF47

IMPERIAL MALE

JIC MALE 3/8-24 UNF

LPIM28-6

Thread 3/8-24 UNF stud
 Dash size -03 JIC
 Hex 7/16"
 Overall length 44.4 mm



Standard HFIM28

JIC MALE 7/16-20 UNF

LPIM29-7

Thread 7/16-20 UNF stud
 Dash size -04 JIC
 Hex 1/2"
 Overall length 47.2 mm



Standard HFIM29

BULKHEAD MOUNT 3/8-24 UNF

LPIM02-6

Thread 3/8-24 UNF stud
 Stud length 24 mm
 Hex 16 mm
 Overall length 56.2 mm



Standard HFIM02
 LP stainless LPIM02-6SS

STANDARD MOUNT 3/8-24 UNF

LPIM01-6

Thread 3/8-24 UNF stud
 Stud length 12.5 mm
 Hex 16 mm
 Overall length 43.7 mm



Standard HFIM01
 Brass HFIM01B
 Stainless HFIM01SS

STANDARD 7/16-20 UNF

LPIM03-7

Thread 7/16-20 UNF stud
 Stud length 12 mm
 Hex 16 mm
 Overall length 44.2 mm



Standard HFIM03
 Stainless HFIM03SS

STANDARD 7/16-24 UNS

LPIM13-7

Thread 7/16-24 UNS stud
 Stud length 12 mm
 Hex 5/8"
 Overall length 44.2 mm



Standard HFIM13

STANDARD NPT

LPIM19

Thread 1/8-27 NPT stud
 Hex 14 mm
 Overall length 42.2 mm



Standard HFIM19
 Stainless HFIM19SS

METRIC MALE

BULKHEAD MOUNT M10×1

LPMM02-M10X1

Thread	M10×1 stud
Stud length	23 mm
Hex	15 mm
Overall length	55.2 mm



Standard HFMM02

STANDARD MOUNT M10×1

LPMM01-M10X1

Thread	M10×1 stud
Stud length	17 mm
Hex	16 mm
Overall length	49.2 mm



Standard HFMM01

LPMM03-M10X1

Thread	M10×1 stud
Stud length	14 mm
Hex	14 mm
Overall length	46.2 mm



Standard HFMM03
LP zinc-nickel LPMM03-M10X1Z

LPMM06-M10X1

Thread	M10×1 stud
Stud length	13 mm
Hex	16 mm
Overall length	45.2 mm



Standard HFMM06
Stainless HFMM06SS

LPMM22Z

Thread	M10×1 stud
Stud length	33 mm
Hex	14 mm
Overall length	66.4 mm



zinc-nickel

Standard HFMM22

STANDARD MOUNT M10×1.25

LPMM04-M10X125

Thread	M10×1.25 stud
Stud length	13 mm
Hex	16 mm
Overall length	45.2 mm



Standard HFMM04

CENTER SUPPORT

BRACKET MOUNT

LPC05

Mount hole 8.5 mm
 Width 20 mm
 Overall length 29 mm

Standard HFC05



CLIP MOUNT

Not all clip mount fittings include an e-clip. Refer to each fitting's image to see if a clip is included.

LPC01

Width 17 mm
 Hex 17 mm
 Overall length 33 mm

Standard HFC01



LPC06

Width 17 mm
 Flats 17 mm
 Overall length 34 mm

Standard HFC06



LPC07

Width 19 mm
 Flats 19 mm
 Overall length 36 mm

Standard HFC07



LPC09

Width 17 mm
 Flats 17 mm
 Overall length 34 mm

Standard HFC09



LPC12

Width 17 mm
 Flats 17 mm
 Overall length 36 mm

Standard HFC12



LPC17

Width 16 mm
 Flats 16 mm
 Overall length 37 mm

Standard HFC17



LPC301

Width 20 mm
 Overall length 33 mm

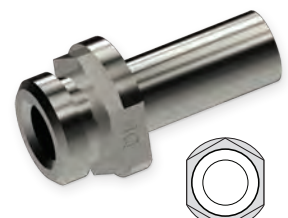
Standard HFC301A
 LP zinc-nickel LPC301Z



LPC331

Width 20 mm
 Flats 17 mm
 Overall length 35 mm

Standard HFC331



/// E-clips, BQ12, are on page 19.